

Mixed Use Districts 5 & 6 Conceptual Master Plan

Meeting Notice

Meeting 2— Community Input

Tuesday, August 4, 2020 | 6:00 to 8:00 pm

Virtual Community Meeting

Use the meeting link in this notice to join

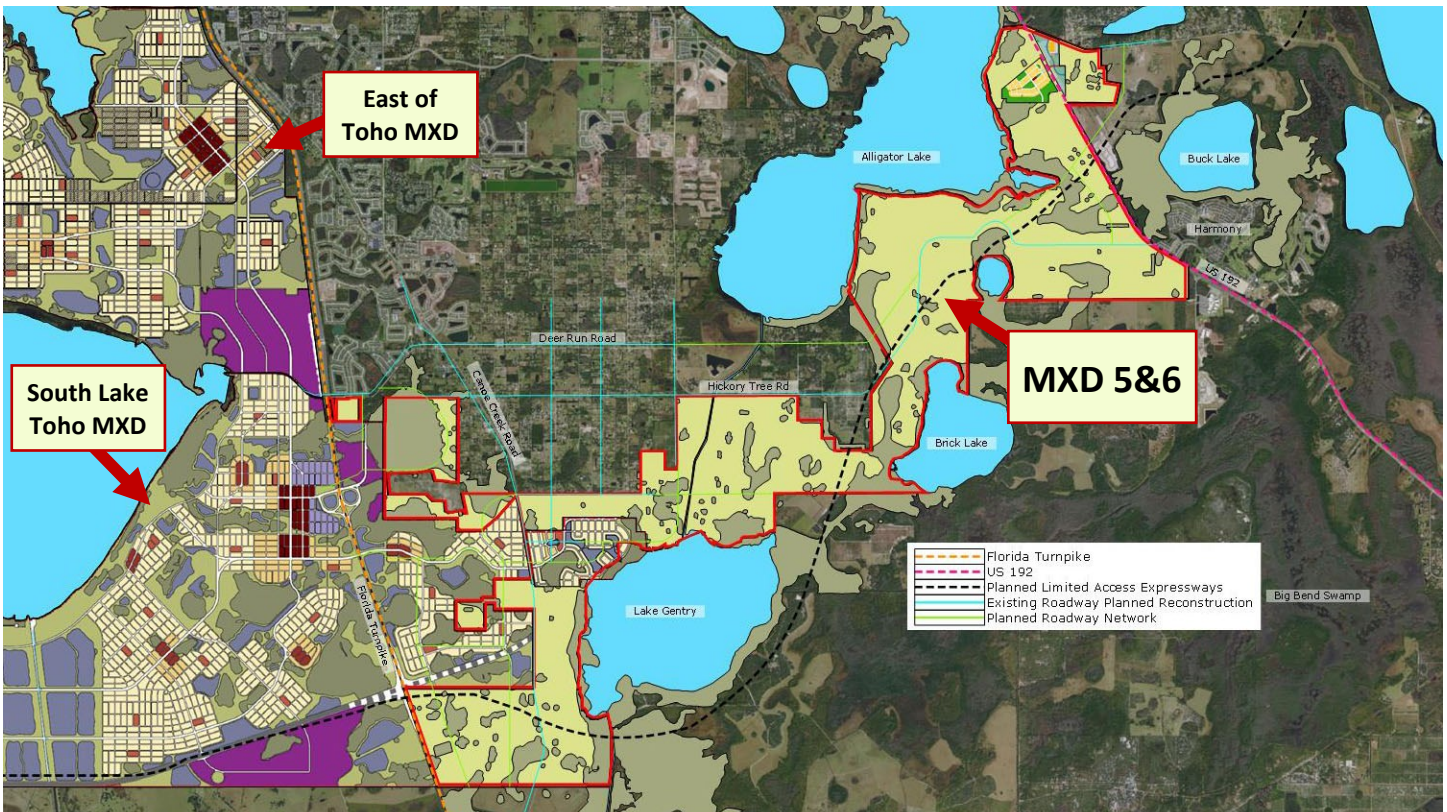
The purpose of this meeting is to continue the planning process for Mixed Use Districts (MXD) 5&6, shown on the map below. The first meeting was held February 12, 2020—meeting materials can be found on the County web page. In light of the current limitation on public meetings, the August 4th meeting will be held online. Access to this meeting is available via the following link:

<https://www.osceola.org/events/mixed-use-districts-5-6-conceptual-master-plan-meeting.stml>

MXD 5&6 is designated in the County's Plan to have a mix of uses (homes, workplaces, stores, services, parks) and will be designed to be a walkable and bikeable community. The Conceptual Master Plan (CMP) will guide *how* the area develops, but other factors will influence *when* the area develops—availability of services such as water and sewer, road construction, market conditions, and other factors. It may develop slowly over a period of time, but whenever it does, the CMP will ensure that development happens **according to the vision we are working together to create**.

Our goal for this meeting is to hear from you—to hear your ideas for the area and to answer your questions and address your concerns. The meeting will be interactive, with participants able to submit questions and comments in real time, but we'd also like to receive input from you in advance, if possible. Please email any ideas, questions, concerns, or recommendations you have to james.resta@osceola.org so we may address them at the meeting.

WEB PAGE: <https://www.osceola.org/agencies-departments/strategic-initiatives/conceptual-master-plans/mxd5-6.stml>. You also can access the web page by scanning the QR code at right with your mobile phone's camera or a QR app.



Osceola County Board of County Commissioners
Community Development Department
1 Courthouse Square, Suite 1400
Kissimmee, FL 34741

**You are receiving this notice because County records indicate
you own property within this planning area.**